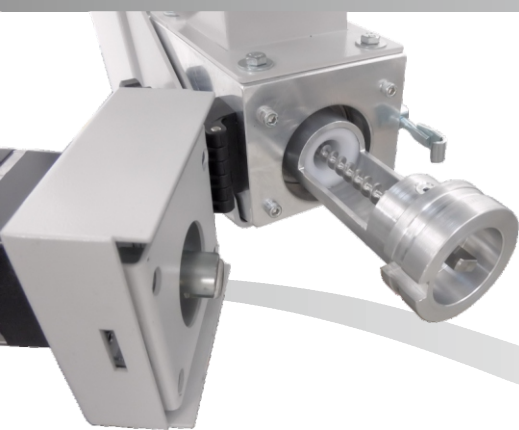




***AROUND YOUR SUCCESS  
THE QUALITY OF THE PROCESS***

***DVS VOLUMETRIC DOSING UNIT  
HIGH ACCURACY, EFFICIENCY, CONTINUITY***

An accurate and continuity of dosing is an important element for have a perfect color in a final high quality product for your success.

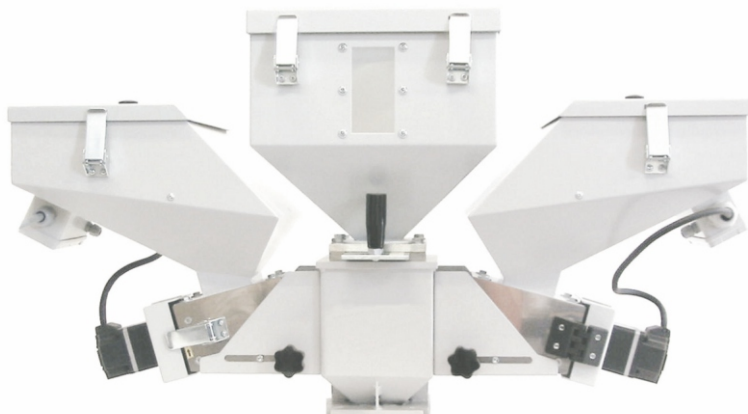


The Simatec's engineers, designed and built these new DVS volumetric dosing units with high performance standards.

The inclined stainless steel dosing screw is headguided and ensures major strength and precision.

The hinged brushless motor allows a quick removal of the screw without using any tool.

All dosing screws are complete with calibrating cylinder.



Cost effective, reliable and easy to use, DVS volumetric dosing units are available with specifications to suit most applications. For injection moulding, extruders, blow moulding machines , they can be quickly and easily installed on site, without specialist assistance.

#### FEATURES:

- Compact dimensions
- Brushless motor
- Made in stainless steel and aluminum
- Static mixer
- Setting different programs
- Automatic or manual controller
- Maintenance program
- Complete discharge hopper
- Fast and easy cleaning and change color
- Big spyhole
- Save color system
- Safety grid
- Remote controller
- Central hopper (option)
- Mixer (option)
- Loader for charge the hopper (option)
- Sensor level and acoustic alarm (option)



DVS with MIXER



DVS05-MS



DVS with SENSOR LEVEL

MODELLO / MODEL	DVS05-MS	DVS06-MS	DVS16-MS	DVS26-MS	DVS36-MS	DVS46-MS
Tensione e Frequenza (V-Hz) Voltage and Frequency (V-Hz)	230 - 50	230 - 50	230 - 50	230 - 50	230 - 50	230 - 50
Potenza motore (W) Motor power (W)	30	30	30	30	30	30
Produzione oraria (kG/h) Max throughput (kG/h)	0,05 - 1,5	0,05 - 1,5	0,07 - 2,5	0,6 - 7	1,5 - 15	3 - 60
Diametro coclea (Ø x passo) Screw diameter (Ø x pitch)	Ø8 x 8	Ø8 x 8	Ø10 x 8	Ø18 x 10	Ø18 x 16	Ø28 x 18
Capacità tramoggia (dm³) Hopper Capacity (dm³)	0,5	6	6	6	6	6
Rumorosità massima (dBA) Noise max level (dBA)	< 80	< 80	< 80	< 80	< 80	< 80
Peso (kG) Weight (kG)	8	8	10	15	16	18